

An aerial photograph of a vast agricultural field, likely a soybean field, with rows of crops stretching towards the horizon. The sky is clear and blue, and the lighting suggests a bright, sunny day. The text 'MATLI' is overlaid in large, white, bold letters across the center of the image.

# MATLI

OUR JOB IS  
HEALTHY AND SAFE FOOD



## WE ARE TURKEY'S NUTRITION EXPERTS

Our most important difference from the others is in the food industry, we have been working as nutrition expert for 60 years.

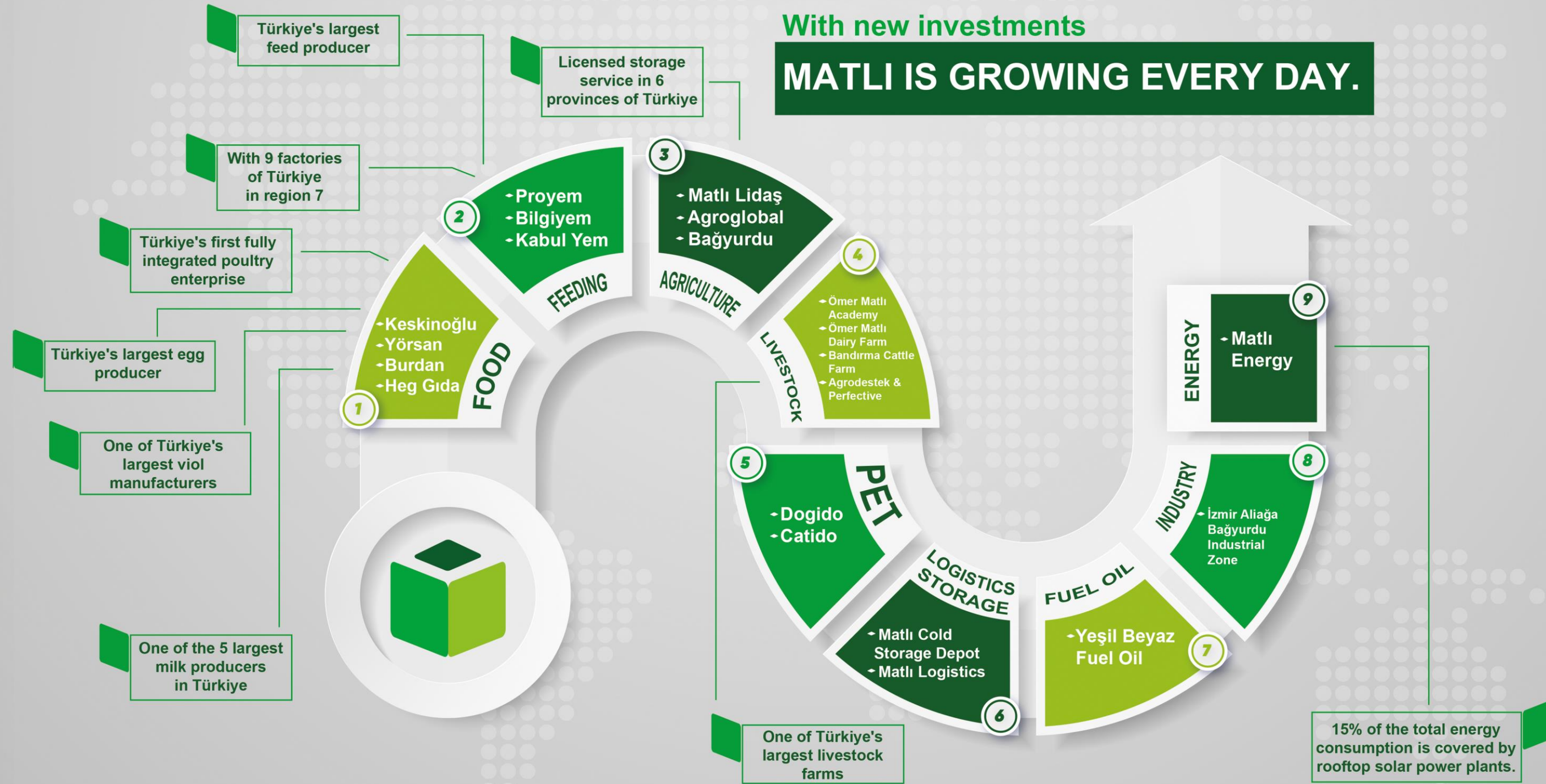
Our excitement is big on our new this way which we began to create new stories and new products for the flavor enthusiasts.

Although we are perceived as a new player in the sector, we are a strong structure with our 60 years experiences, and we aim to provide to our consumers different tastes and differences.





# Our Fields Of Activities





# Our Operations



We operate across seven regions of our country, with a presence in nine industries, 28 companies, 12 brands, over 10,000 suppliers, two R&D centers, more than 6,000 employees, and a network of over 1,000 dealers in all 81 provinces.



# THE LARGEST EGG PRODUCER IN TÜRKİYE

 **keskinoglu**

**BUR  
DAN**



# Daily Egg Production of 5.5 Million Pieces

We operate as Türkiye's largest egg producer with a daily production capacity of 5.5 million eggs in our facilities in Karacabey and Akhisar.



Akhisar/Manisa



Karacabey/Bursa





# International Awards

Ömür Akkor's book "Burdan Recipes" was chosen as the 'World's Best Culinary History Book' at the Gourmand Cookbook Awards.









The foundations of Yörsan were laid in 1964 with the establishment of Yörükler Gıda Limited Company. In 1979, Yörsan A.Ş. was established with the purchase of a dairy farm in Susurluk and the launch of the dairy products factory built in 1984. Yörsan became one of the pioneers of the sector by expanding its field of activity with Turkey's first white cheese factory established in 1984.


In 2022, Yörsan joined the Matlı Group of Companies, continuing its development. Combining Yörsan's know-how that extends from tradition to the future with nearly 60 years of experience in agriculture and animal husbandry, Matlı revitalized and strengthened Yörsan. In 2023, it added Matlı's more than half a century of feeding experience to its products, which it renewed by remaining loyal to the traditional flavours of Yörsan, and brought them to its consumers.

In 2023, Yörsan develops new products at the R&D Centre established within its structure. Matlı, which ensures the quality of animal feed from which milk is obtained, while it is still in the ground, produces corn seeds used in feeding with the cooperation it has established, and provides qualified raw materials through licensed storage activities. Thus, the high-quality milk obtained from cows fed with high-quality feed produced by Matlı itself is shaped by expert hands in Yörsan facilities with traditional Yörsan recipes and transformed into unique flavors.

Yörsan has a wide range of products with nearly 200 varieties in the milk and dairy products category. Yörsan is also the first brand to offer Turkey's **first creamy pan yoghurt**, **first home-made style yoghurt** and **first cultured white cheese**, which are highly appreciated by consumers.







**WE ARE ONE OF THE 5  
LARGEST MANUFACTURERS IN  
TÜRKIYE**

**With a daily milk processing capacity of 1,500 tons, we aim to provide employment for 2,500 people, including 1,000 people in production and 2,500 people with the field team. We provide added value to the lives of our consumers with our Yörsan-style working model.**



**WE PRODUCE AT  
HIGH CAPACITY**



**Yörsan**  
matlı

We process 1,500 tons of raw milk per day with 60,000 m<sup>2</sup> of closed production area on a 120,000 m<sup>2</sup> land and 6 milk acceptance points.



# Personel İstihdamımız

Yörsan  
Usulü



Yörsan  
Üretim Tesisi

In total we employ 537 to people in Yörsan  
factory and in Yörsan field personnel.



# Yörsan Usulü

We deliver our main raw material, milk, to our consumers in its most natural form.







# Yörsan Usulü

With our Yörsan method approach, we shape all our products in expert hands.



# Yörsan Usulü

We produce the classic Yörsan flavors that our consumers miss, meticulously and with high precision.





We carry out the packaging process with technological investments, without human touch, and by preserving the most delicious form of milk, namely the Yösan method.

# Yösan Usulü





# Yörsan Usulü

We work to make our Yörsan Style  
cheeses the most delicious on the table.





# Yörsan Usulü



We both protect the values of our country and contribute to its branding with production models that highlight the geographically indicated values of the regions.



# Yörsan Usulü

## SUSURLUK LEZZETLERİ



We provide different experiences with our geographically indicated product families to our consumers.



# Yörsan Usulü

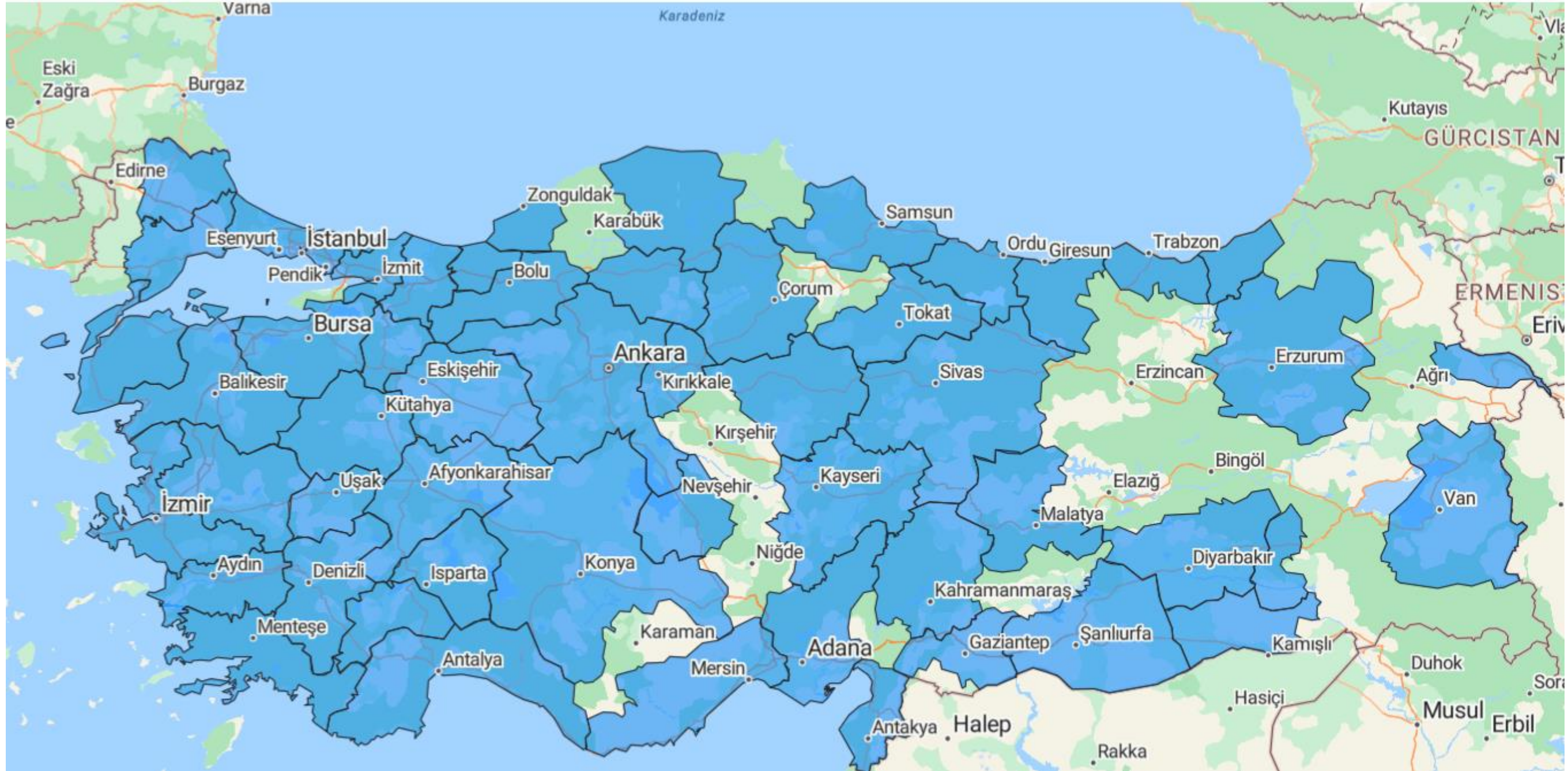


We continue our growth with nearly 200 SKU's.





# Sales Network



Our current cities which we delivery.





**keskinoglu**



# TURKEY'S FIRST FULLY INTEGRATED POULTRY FARMING ESTABLISHMENT





# Chicken Meat Processing



[www.keskinoglu.com.tr](http://www.keskinoglu.com.tr)



We carry out all processes from cultivation to slaughter, packaging to shipment with a fully integrated production system.



# Further Processing Products

Annual production of 30 thousand tons in nearly 200 product types. We offer our further processed product group to consumers in many sales points in Türkiye, primarily national and local chain stores, and online sales channels.





# Annual Pasteurized Egg Production Capacity of 12.000 Tons

We offer eggs processed in fully automatic machines to the market as white, yolk and whole eggs, as desired.





# 10 THOUSAND TONS OF PAPER RECYCLING ANNUALLY

We process recyclable paper in fully automatic production units in refined facilities and transform it into egg containers, which are the guarantee of high-quality products.





# VEGETABLE OIL PRODUCTION



The raw material for olive and olive oil products produced in the facility is obtained from both 12,356 olive trees located in the factory area and olives carefully selected from regional producers. The facility can produce 6,000 liters of oil per year.

It is also planned to produce sunflower oil in the near future.







## R&D CENTERS

We Research, We Develop, We Produce...

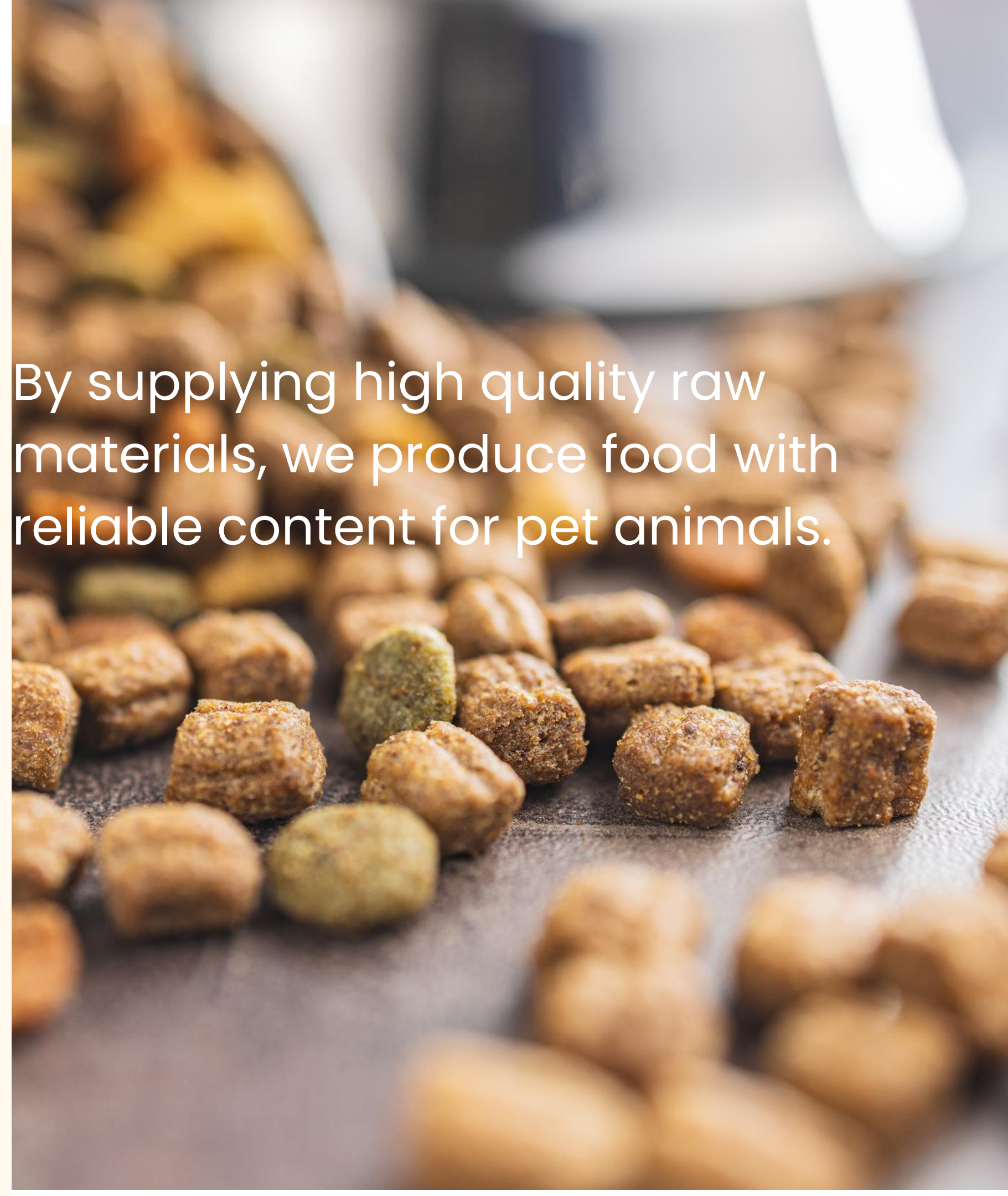
We continue our work in our R&D Centers within Keskinođlu and Yörsan, where we will deliver agricultural, animal and plant values of different geographies to our consumers with new products.



# DOGİDO CATİDO



By supplying high quality raw materials, we produce food with reliable content for pet animals.







# MATLI COLD STORAGE

We are investing in warehousing to ensure timely and high-quality product shipments for our manufacturers to our suppliers.



# Yeşil-Beyaz Oil and Fuel

We manage operations that will reduce the costs of our producers and suppliers through the sale of oil and petroleum products.





# Farm Management

ÖMA  
Dairy Farm



ÖMA  
Academy



Bandırma  
Cattle Farm







# Ömer Matlı Academy

We have been conducting research and training activities in the fields of animal care, nutrition and health for efficient milk production since 2006. Within the scope of recent studies, we are conducting research on reducing animal carbon emissions.







# Ömer Matlı Dairy Farm



Capacity of 1,800 cattle, 750 of which are dairy cattle

While we aim to produce quality milk with the Holstein, Simmental and Red Holstein breed animal population on our farm, we also offer the opportunity to meet the need for pregnant heifers of different breeds to be preferred by our business partners engaged in animal husbandry.



# Bandirma Cattle Farm

## 50 THOUSAND CATTLE CAPACITY

50 thousand cattle  
capacity in 80 acres of  
closed area built on 700  
acres of land

On our farm where we have Holstein, Charolais, Limousin and Belgian Blue breed animals, we achieve a carcass yield of up to 54% in lean cuts in local animals and 63% in imported animals. Along with animal supply, we also offer nutrition consultancy to our breeders.



# FEEDING GROUP

**PROrem**

**kabul yem**

**Bilgiyem**  
Bilgi İlgı Alınteri

Türkiye's Largest and Leading  
Feed Producer



# FEED PRODUCTION FACILITIES



## **KARACABEY FEED PRODUCTION FACILITY**

Date of Establishment: 1988  
Storage Capacity (tons): 108.000  
Production Capacity (tons/hour): 75



## **KONYA FEED PRODUCTION FACILITY**

Date of Establishment: 2006  
Storage Capacity (tons): 87.000  
Production Capacity (tons/hour): 75



# FEED PRODUCTION FACILITIES



## **TURGUTLU FEED PRODUCTION FACILITY**

Date of Establishment: 2009  
Storage Capacity (tons): 41.000  
Production Capacity (tons/hour): 90



## **CORLU FEED PRODUCTION FACILITY**

Date of Establishment: 2011  
Storage Capacity (tons): 44.000  
Production Capacity (tons/hour): 75



# FEED PRODUCTION FACILITIES



## GAZIANTEP FEED

### PRODUCTION FACILITY

Date of Establishment: 2014

Storage Capacity (tons): 50.000

Production Capacity (tons/hour): 90.000



## SAMSUN FEED

### PRODUCTION FACILITY

Date of Establishment: 2012

Storage Capacity (tons): 34.000

Production Capacity (tons/hour): 90



# FEED PRODUCTION FACILITIES



## **BURDUR FEED PRODUCTION FACILITY**

Date of Establishment: 2019  
Storage Capacity (tons): 41.000  
Production Capacity (tons/hour): 120



## **POLATLI FEED PRODUCTION FACILITY**

Date of Establishment: 2020  
Storage Capacity (tons): 65.000  
Production Capacity (tons/hour): 120



# FEED PRODUCTION FACILITIES

DİYARBAKIR

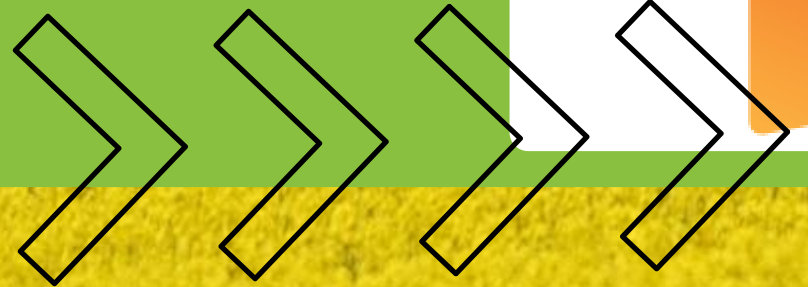
Date of Establishment: 2022  
Storage Capacity (tons): 75.000  
Production Capacity (tons/hour): 120

Türkiye's Largest  
Feed Production  
Facility





# COMPLEMENTARY FEEDS







With our Agro Destek brand, we produce flake products that have a complementary element in animal nutrition. With our Perfective brand, we meet the vitamin and mineral needs of animals.





# EFFICIENCY EXPERTS



With our efficiency expert technical field team, we work with all our strength to always provide maximum profit and minimum cost to our growers all around our country.





# Türkiye's 3rd largest Licensed Storage Company

Karacabey: 40 thousand tons

Konya: 60 thousand tons

Gaziantep: 22 thousand tons

Çorlu: 28 thousand tons

Turgutlu: 14 thousand tons

Polatlı: 40 thousand tons

**TOTAL: 204 thousand tons**

There is a capacity target of 254 thousand tons with an additional capacity increase of 50 thousand tons in 2024.







# Bağyurdu Fruit Farming

We produce with good agricultural practices to develop products for export.

We evaluate our plum, grape and cherry harvests in domestic and foreign markets on 1,380 acres of land in İzmir Kemalpaşa.





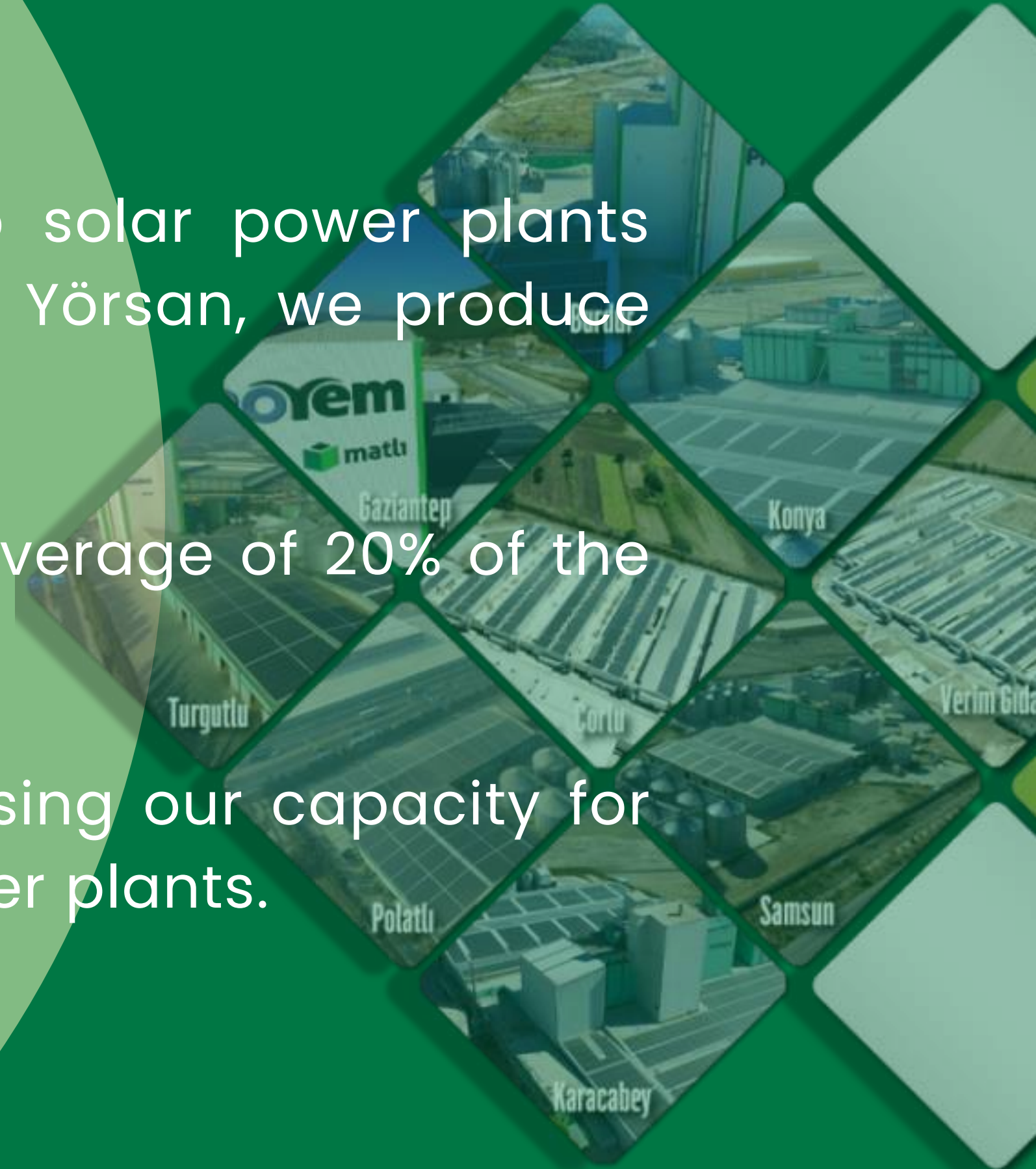
# RENEWABLE ENERGY

With our feed production facilities, rooftop solar power plants installed in our companies Verim Gıda and Yörsan, we produce 25.000.000 kWh of energy per year.

With our installed power, we can meet an average of 20% of the needs of our facilities.

Along with our facilities, we are also increasing our capacity for clean energy production with land solar power plants.

**TARGET: 250 MW INSTALLED POWER**





# İZMİR ALIĞA BAĐYURDU PRIVATE ORGANIZED INDUSTRIAL ZONE

We offer investment opportunities for entrepreneurs in Türkiye's second organized industrial zone with a special status, the official establishment of which was completed as the 368th organized industrial zone of Turkey in the Aliađa district of Izmir.



# CORPORATE SOCIAL RESPONSIBILITY

We have known for 60 years that high quality milk and dairy products are possible with quality raw materials, quality feeding and conscious animal husbandry practices, and we support our women producers.



**KADIN  
ÜRETİCİLERİ  
DESTEKLEME  
PLATFORMU**

KADIN ÜRETİCİ İLE OMUZ OMUZA



# We Support Conscious Animal Husbandry and Women Producers

We support our women producers in the sector with our information platform and on-site support activities that will ensure that the right applications are made in order to increase their productivity as well as the machinery and equipment in line with their basic needs and expectations.

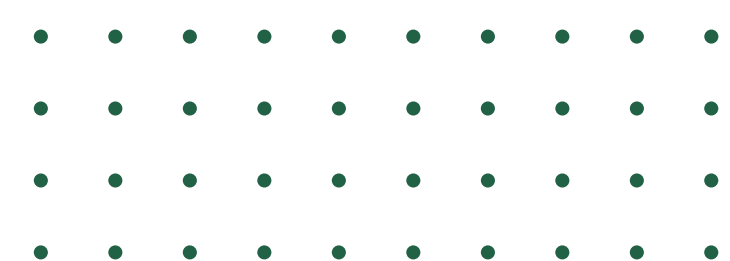


**Temiz  
Süt Üretimi**



**Hemen  
başvur!**

Yanlış veya eksik teçhizat kullanımı nedeniyle atılmak zorunda kalınan süt miktarı, üretilen sütün en az % 10'udur.







KADIN DOSTU  
M.A.R.K.A.L.A.R



Our “Shoulder to Shoulder with Women Manufacturers” project, through which we support women entrepreneurs, was deemed worthy of the “Women-Friendly Brands 2024 Awareness Award” by the selection committee.





# We Support Quality Education



We continue to support education with the schools we have built in Karacabey in the name of family elders.



# Hamidiye Vocational and Technical Anatolian High School

We carry out social responsibility activities to develop the agriculture and livestock sector and raise conscious producers. Within the scope of our cooperation with Hamidiye Vocational and Technical Anatolian High School; we contribute to the training of qualified workforce needed by the animal health, agriculture and food sectors.





# WE INFORM OUR MANUFACTURERS 24/7

The screenshot displays the website of the Hayvancılık Akademisi (Animal Husbandry Academy). The header includes the academy's logo and name, along with navigation links for ANASAYFA, TARIM, HAYVANCILIK, HİBE - DESTEK, HAYVAN SAĞLIĞI VE BESLENME, AKADEMİ TV, YETİŞTİRİCİ KÖŞESİ, and DİĞER. A banner for 'Meşhur Yörsan Susurluk Ayranı Şimdi Migros'ta!' is visible. The main content area features a 'GÜNCEL' section with a headline about inflation and a search bar. Below the search bar are four article thumbnails: 'Tarımda girdi enflasyonu Ekim'de yükselişini sürdürdü', '2024 yılında doğan buzağuların desteği ne zaman ödenecek? Çalışma takvimi işliyor...', 'Tarımda üretici enflasyonu 2,5 yılın zirvesinde', and 'Bakan Yumaklı: Et fiyatlarında suni artışlar olduğunda müdahaleden kaçınmayacağız'.

In the Animal Husbandry Academy we have established, we respond to the information requests that reach us with the consultancy of our expert veterinarians and Prof. Dr. İsmet Türkmen and contribute to the productivity and development of our producers. We are working to popularize conscious and efficient animal husbandry.



A photograph of a vast field of golden wheat under a warm, golden sunset sky. The sun is low on the horizon, creating a soft, hazy glow. The wheat stalks are in sharp focus in the foreground, with their heads nodding. The background is a soft-focus expanse of the field leading to a line of trees on the horizon.

**THANK YOU**